

I003934 Mirabella Genio Wi-Fi Pixel Floor Lamp

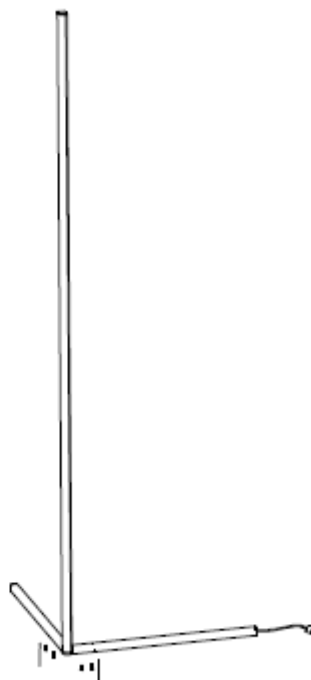
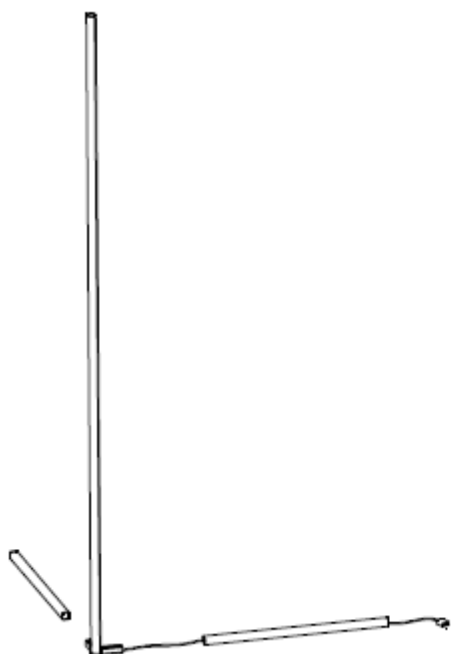
Item # I003934

TO ENSURE THE SAFE AND SATISFACTORY OPERATION OF THIS SET PLEASE READ THESE INSTRUCTIONS CAREFULLY AND RETAIN FOR FUTURE REFERENCE

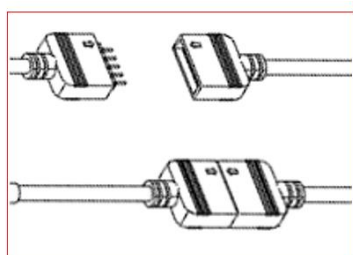
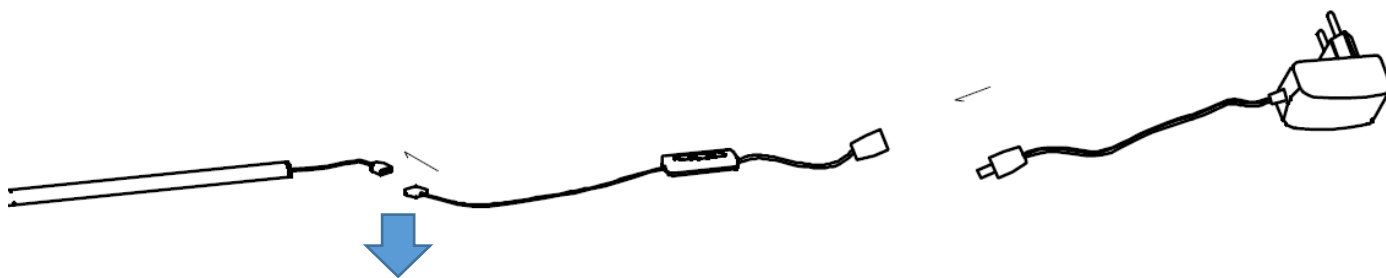
SAFETY INFORMATION:

- Remove set from packaging before connecting to a power supply.
- only use the adaptor that is supplied.
- Ensure that the cable is completely uncoiled whilst set is in use.
- LED bulbs are non-replaceable.

PRODUCT INSTALLATION



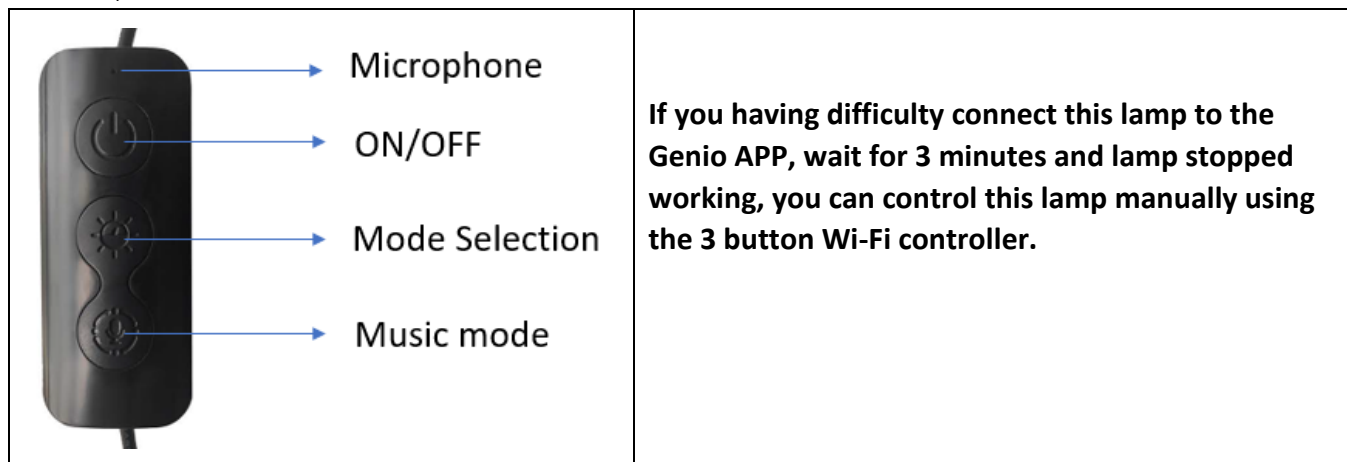
When connecting the Floor lamp to the Wi-Fi controller, make sure the arrows are aligned with each other.



Wi-Fi pairing information (BK, EZ and AP method)


1. Download "Mirabella Genio" App from the APP store or Google Play and register an account.
2. Connect your mobile phone to 2.4GHz Wi-Fi network. (Please note, that this unit does not support 5GHz Wi-Fi)
3. Connect the Wi-Fi controller to the light, and the adaptor to the Wi-Fi controller
4. Wait for the light to commence to blink.

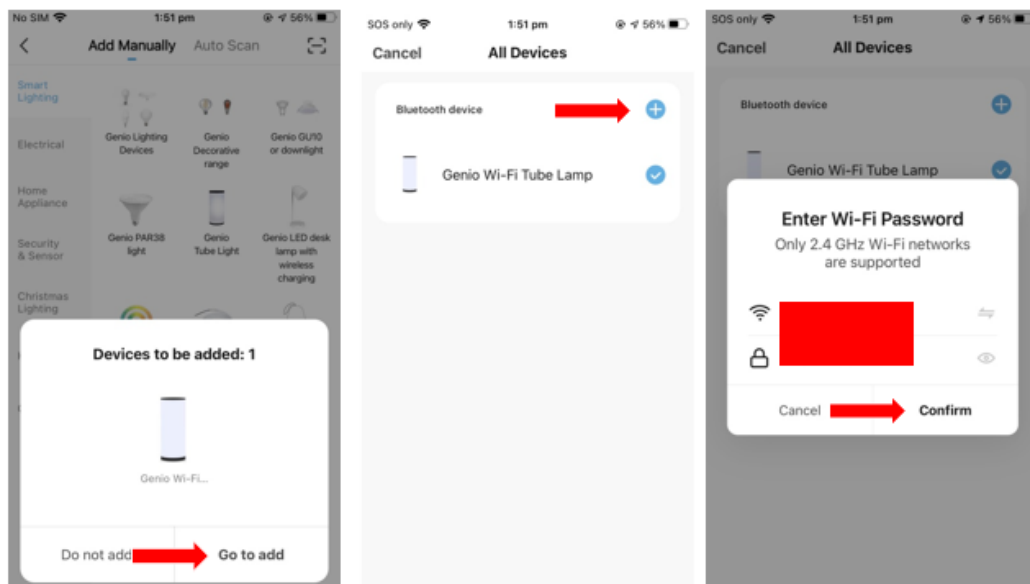
If the Floor light does not start to blink when first powered on, Press and hold the ON/OFF button on the Wi-Fi controller, until it starts to blink.




Bluetooth BK method

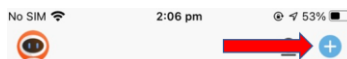
Our latest genio smart Wi-Fi lighting range has a Bluetooth pairing assist function, to take advantage of this function, please ensure that the Bluetooth on your phone is turned on.

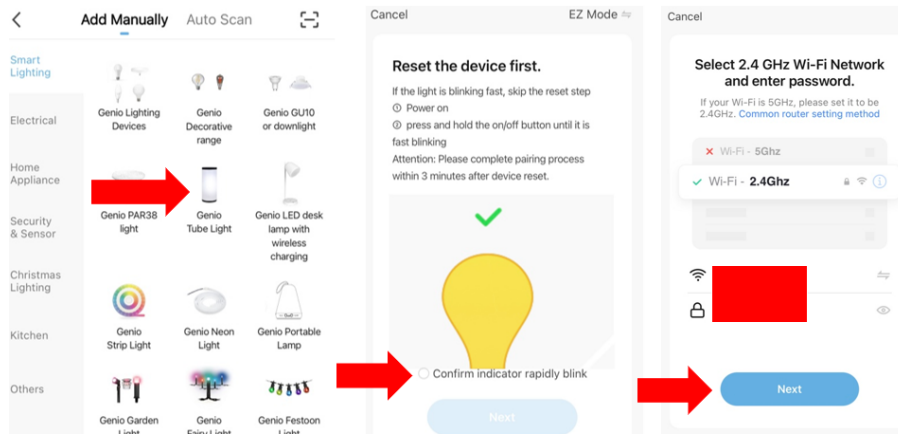
Make sure the light is blinking fast (2 blinks per second), Open Mirabella Genio app, tap on the plus symbol  , The APP will now automatically find the lights, once the app identifies the lights, follow the instructions below finalise the pairing of the lights to the App.



Fasting blinking EZ method (when the Bluetooth on the phone is turned off)

1. Open the Mirabella Genio app, tap on the plus symbol. 
2. Select Genio Tube light under the smart lighting, then follow the in-app prompts to connect tube light to your app



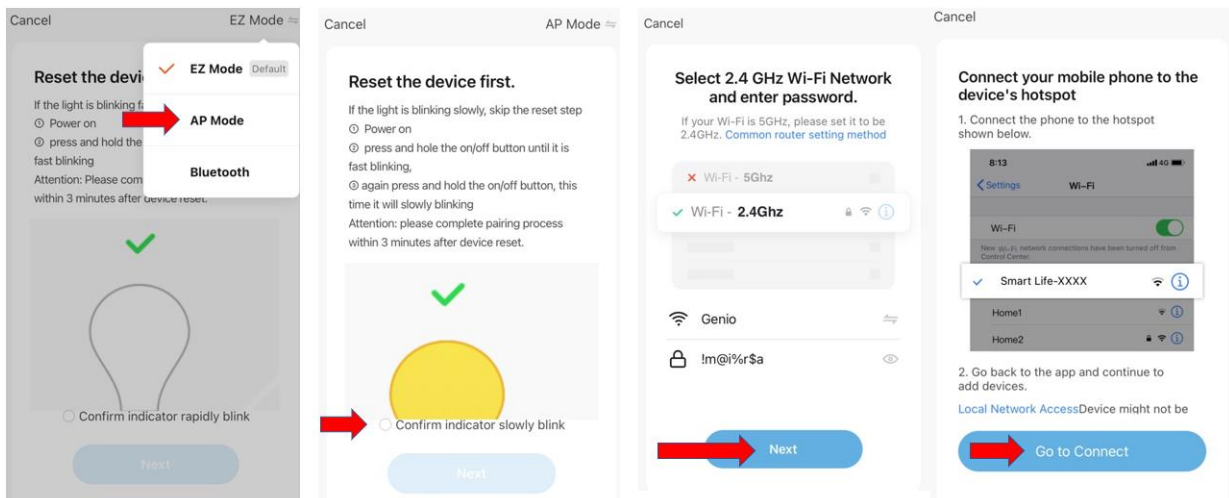


Slow blinking AP method (1 blinking per 2 second)

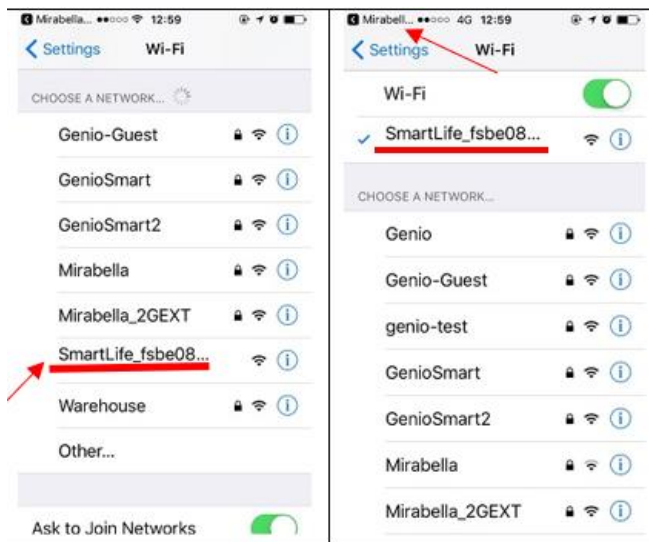
If the fast blinking method didn't work for you, please try the slow blinking AP method.

While the light is fast blinking, press and hold the ON/OFF again and wait for the light to start blinking slowly (1 blink per second).

1. Open the APP this time on the **reset the device first** screen.
2. Tap on **EZ mode** located in the top right hand corner of the screen, select **AP Mode**.
3. Now Confirm **indicator slowly blinking**, tap Next, then **Go to connect**. The app should automatically take you to your Wi-Fi screen, if it does not get out of the Genio app and go into your phone Wi-Fi screen page.
4. Search for a Wi-Fi signal commencing with **SmartLife_XXX**, once found select it to complete the pairing process.



5.



If you cannot see the **SmartLife-xxxx** on the list, it means the light was not blinking slowly, please reset it and try again.

After you have connected to **SmartLife_XXXX**, return back to the Mirabella Genio app and it will commence the 0-100% countdown and connection process, once complete, your lights are now paired to the app.

	<p>Please pay attention to this screen to determent the cause of time-out error</p> <p>If the light never stops blinking, there could be issue with the Wi-Fi controller, please check our online FAQ page before returning it</p> <p>if light stopped blinking, but unable progress to “register on cloud” it indicates communication error with your router to our cloud service</p>	<p>please check our online FAQ page and ensure.</p> <ol style="list-style-type: none"> 1. You enter the correct 2.4GHz Wi-Fi name and password 2. Wi-Fi controller is in a location with good Wi-Fi coverage, try move it closer to the router 3. 5Ghz Wi-Fi signal is turned off on the router (can be turn on after the device is connected) 4. if you are using IOS 14, please ensure “local network” permission is turned on for Genio APP
--	---	---

FAQ:

Q. I have internet/power outage and device went offline and does not reconnect back online by itself?

A. Go the device’ settings page (pencil or ... icon), look for “remove device” Remove it and reset the device and pair it again through the app.

If you still having issue with pairing after use AP method, please check our online FAQ pages on www.mirabellagenio.com.au/faqs

Mirabella International Pty Ltd
 1 Mirabella Drive Tullamarine VIC. 3043 Australia
 t: 1800 636 528
 e: genio@mirabella.com.au