



IR Transceiver User Manual

HKWL-IR02W

1. **PRODUCT OVERVIEW** This Smart IR is a Wi-Fi based IR Blaster. By adding or DIY learning the IR codes to the APP, it can remotely control IR based home appliances such as TV's, airconditioners etc. via internet connection and the Mirabella Genio phone APP.

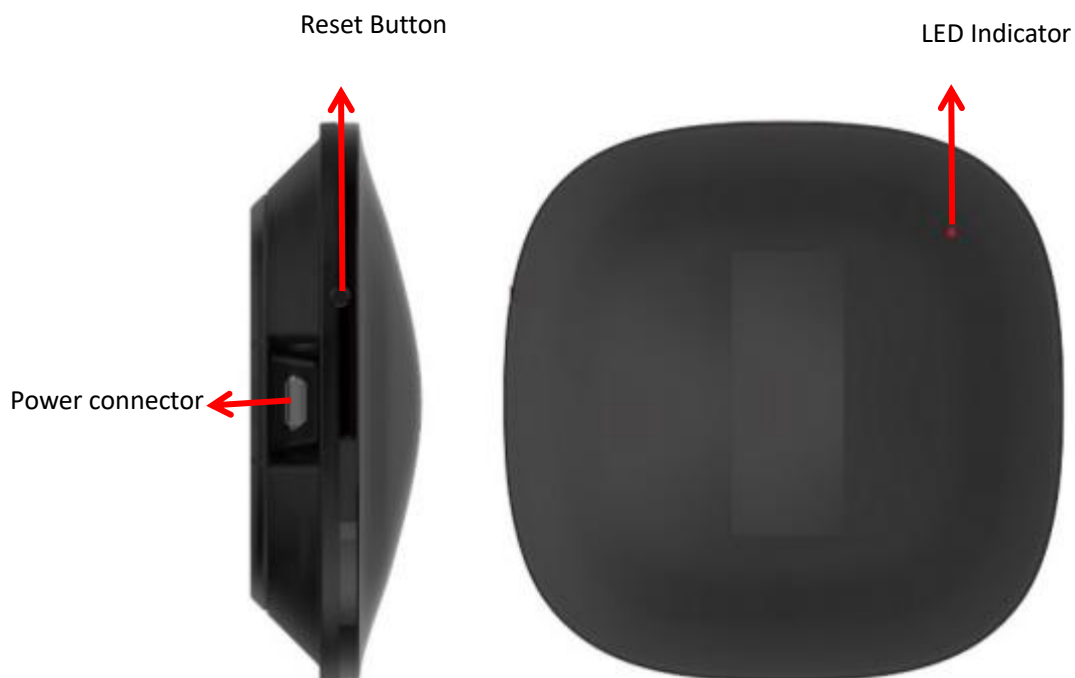
2. PRODUCT FEATURES

- Compatible with Amazon Alexa and Google Assistant
- Working in 802.11 b/g/n 2.4GHz wireless network (no hub required)
- Wi-Fi network configuration with EZ (Smart Config) and AP(Access Point) mode
- Remote control all your IR appliances through APP
- A full list of IR brands saved in IR codes cloud library
- DIY IR codes learning, control whatever appliance through your mobile
- Input: 5V 1A Micro USB
- CE, FCC, RoHS certified

How to Get the device working:

- Make sure your Wi-Fi network work in 802.11 b/g/n 2.4GHz and internet available;
- Download the Mirabella Genio APP from Apple store or Google Play;
- Register an account in APP and login with your email address or Mobile phone number;
- Setup the device Wi-Fi connection with your APP;
- Test and check the Device and APP working state;
- Check working with Alexa and Google Home if necessary;

3. PRODUCT STRUCTURE



Button activities and LED indicator:

- 1) **Power connector:** 5V 1A Micro USB
- 2) **Button:** Press and hold the button for 5 seconds to enter into Wi-Fi connection (or configuration). The LED indicator will blink rapidly (EZ mode) or slowly (AP mode). EZ mode connection is set as default in Wi-Fi configuration. Press and hold the button for 5 seconds will enable the device switch between EZ mode and AP mode.
- 3) **LED indicator:** indicate the device working state
 - EZ/AP Mode: Indicator flash rapidly / flash slowly
 - Network connected, normal working state: Indicator keeps on

Network connected, sending data: Indicator flashes one time

Enter learning mode: Indicator turns off

Receive Learning IR code command: Indicator turns on

4. SPECIFICATIONS

Input voltage range	5V
Operating Current	110mA
Battery	Micro USB power adapter with 5V/1A
IR Emitting Wavelength	940nm
IR Distances	8M
IR Learning Distances	3CM
IR Angle	360°
IR receiving frequency	38 KHz
Radio Frequency	2.412-2.484GHz
WIFI standard	IEEE802.11b/g/n (channel 1-14)
Data transmission rate	11b:1,2,5.5,11(Mbps) 11g:6,9,12,18,24,36,48,54(Mbps) 11n:HT20 MCS0-7
Operating temperature	-10°C~40°C
Storage temperature	-20°C~+60°C
Relative humidity	8%~80%

5. INSTALL APP AND REGISTER AN ACCOUNT

5.1 Scanning the following QR code to download APP for Android and iOS System. Or you can download the APP named as “Mirabella Genio” from Apple store and Google Play.

5.2 Launch the APP and register an account with your email address then login;

i) Download APP and install

ii) Register the APP

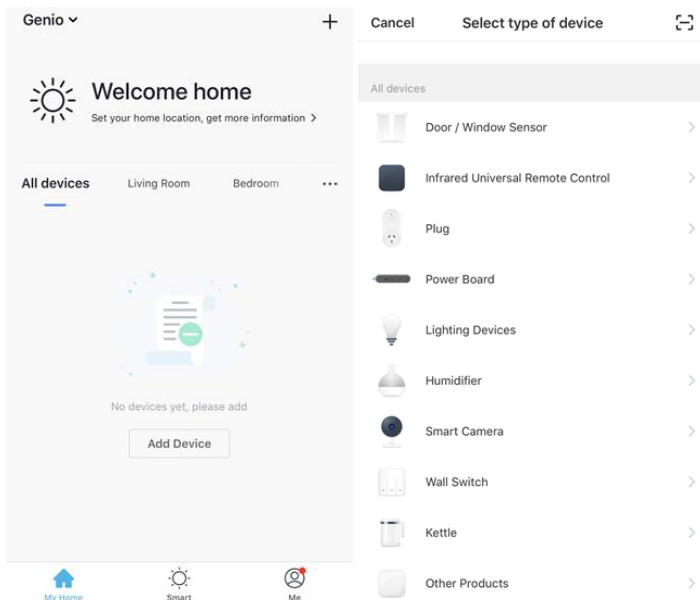


Android & iOS



6. ADD AND REMOVE DEVICE IN YOUR APP ACCOUNT

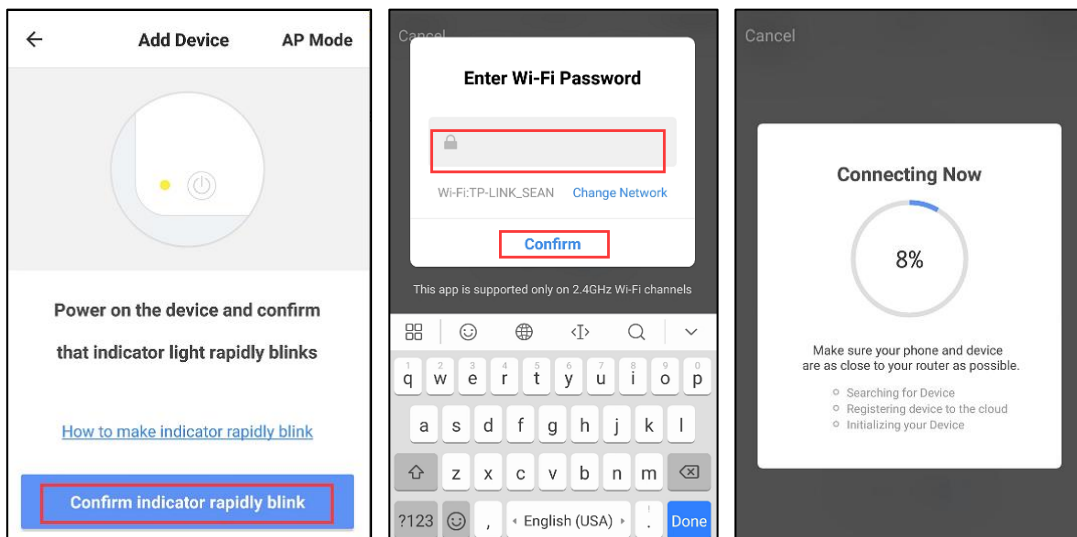
6.1 Launch the APP and login, Click **ADD DEVICES** or + -> All -> Infrared Universal Remote Control to start the device adding.



6.2 TWO WAYS TO ADD DEVICES

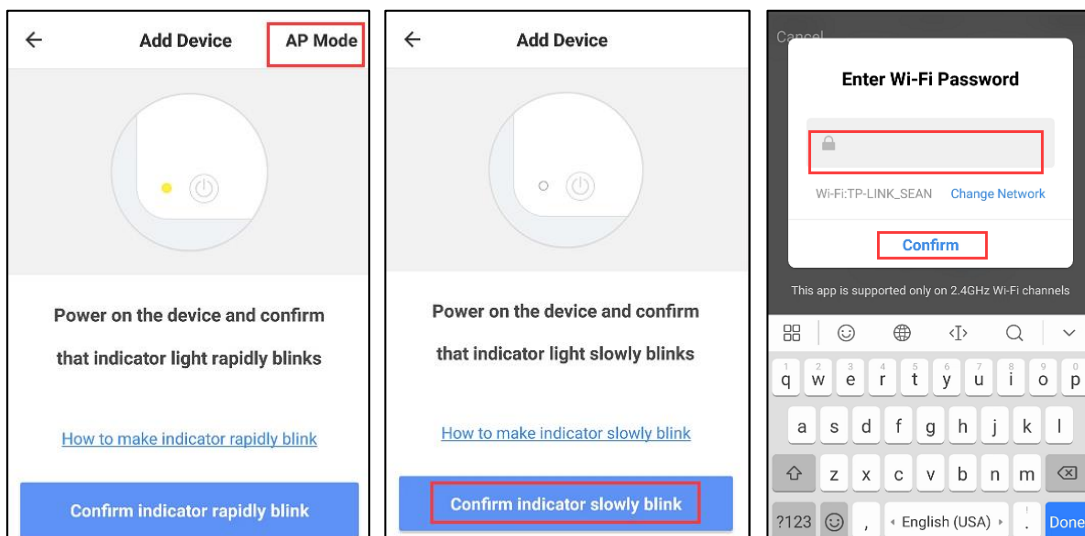
● EZ mode

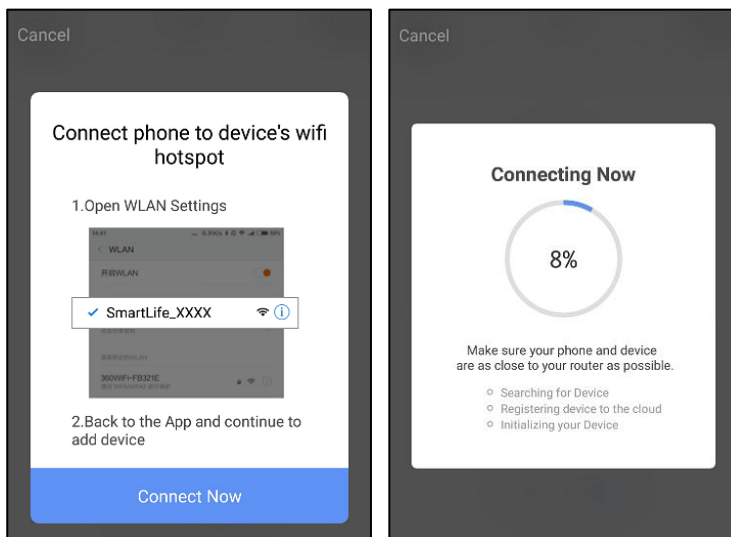
Smart IR will blink fast in red when powered on in EZ mode. Input the password of the designated Wi-Fi network to include the device to Cloud. Waiting for around 30 seconds before the device inclusion process is complete.



● AP mode

Smart IR will blink fast in red when powered on. Press and hold the button for 5 seconds and then release. The LED indicator will blink slowly in red. Choose AP Mode, select the Wi-Fi network your mobile is connected to and enter the Wi-Fi password. Select the Device AP name with SmartLife-xxxx in Wi-Fi list then back to App to finish the device adding.



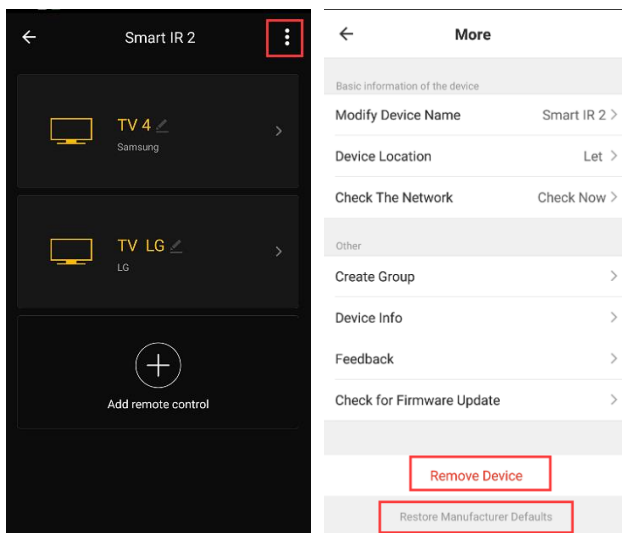


6.3 Users can re-name or share the device after Wi-Fi connection is finished.

Make sure the device is working in EZ/AP mode, if the APP works in EZ/AP mode.

6.4 Remove device

1) Click “” to enter into next interface as shown in picture below, Click “Remove Device” to delete this device from APP; click “Restore manufacturer Defaults” to remove the device from APP.

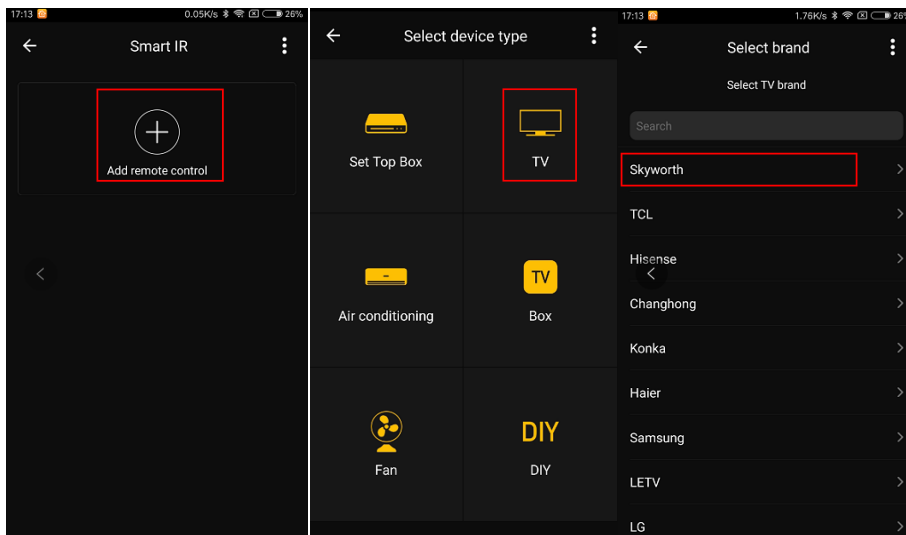


2) After remove device or Restore manufacturer defaults from the APP, repeating the Wi-Fi network inclusion steps to include the device to a new Wi-Fi network.

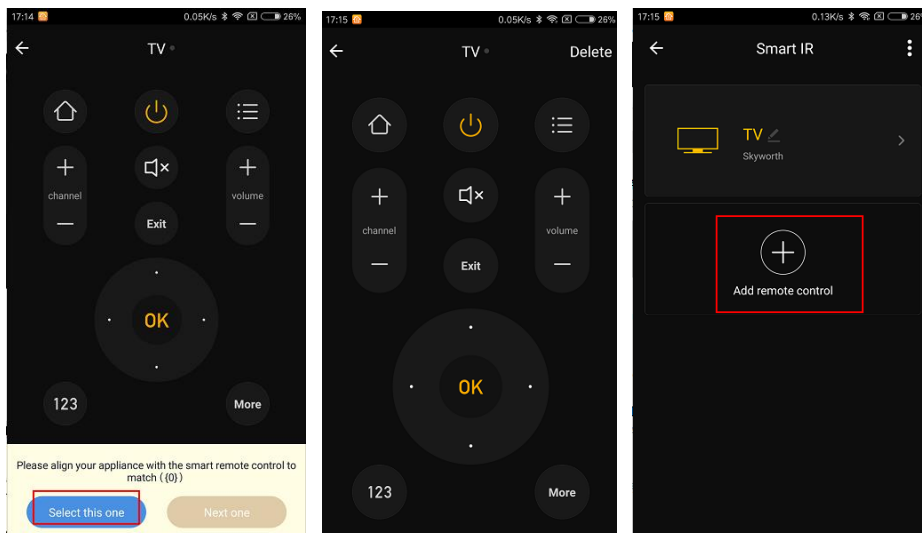
7. SEARCH AND ADD IR CODES

7.1 Adding IR Codes from existing brand list

1) Enter into Device user interface after network inclusion, then press “” and you can search and add the IR remote controller of Set-Top Box (STB), TV or air conditioner etc. from the existing brand list in the APP, here are Skyworth TV as example.

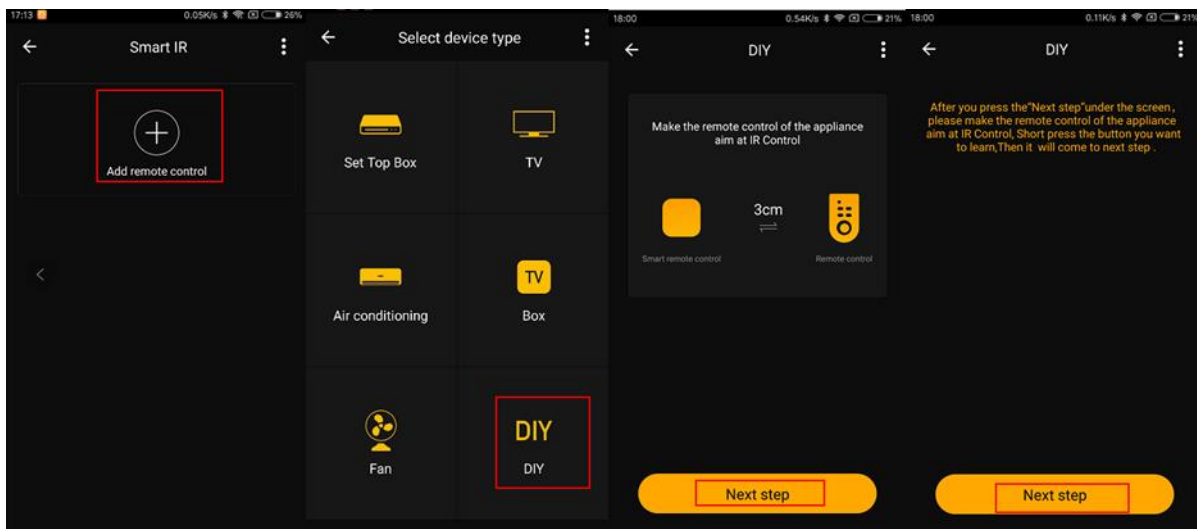


Enter into Skyworth remote control interface and click the *power button*. If the *power button* works (means to turn on/turn off TV), click “Select this one”, then Skyworth TV remote control is added in list. Click “Add remote control” to add next one.



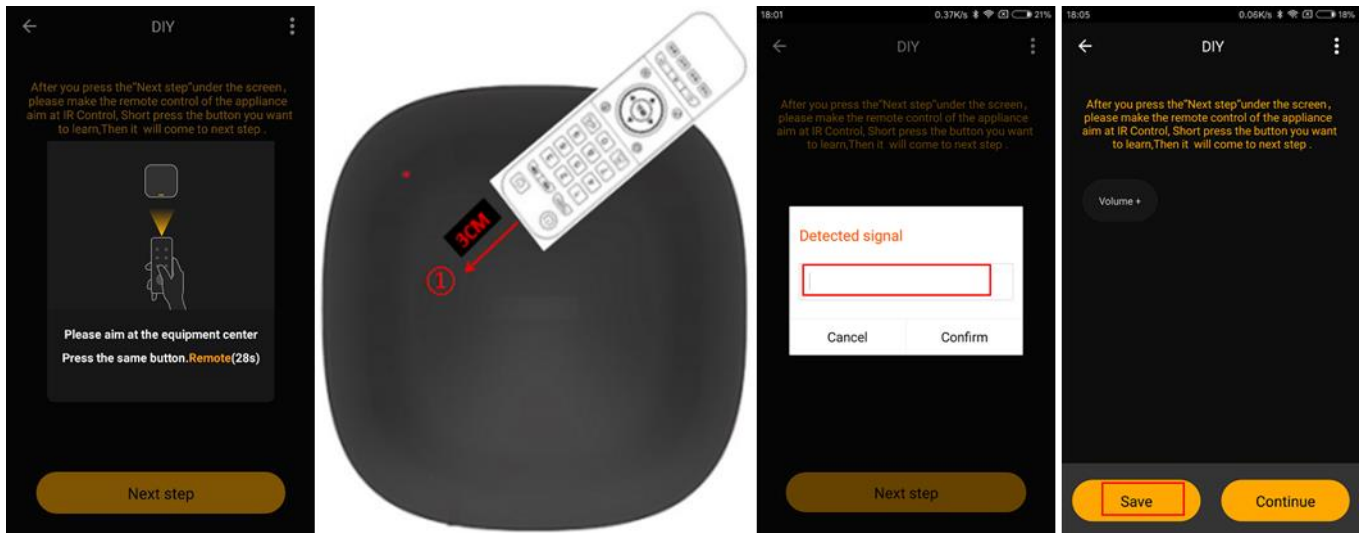
7.2 Add IR codes by DIY learning

1) Click “DIY”, then click “Next step” to enter into DIY learning mode.

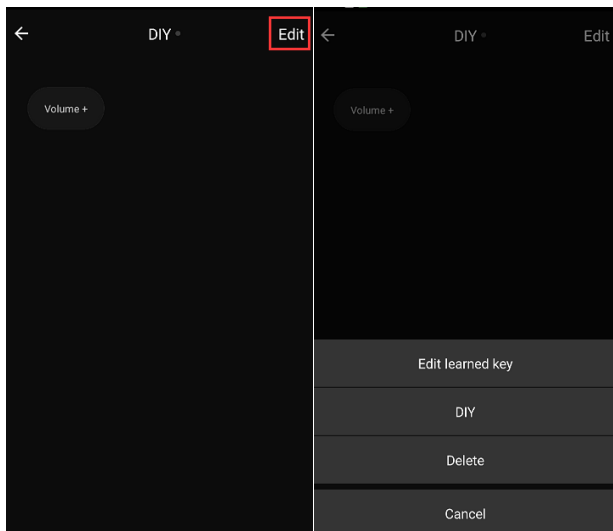


On DIY learning, place remote controller at position ① on the smart IR blaster (shown as below picture) within 3 CM so that the IR codes could be completely learned. Then short press the button that you want to learn on remote controller. It will come into next step after DIY learning is finished. Name this button and save it.

Note: Short press means press the button in IR remote controller shortly (Press then release in 0.5 to 1 second)



Click “Edit” on upper right corner of DIY interface to make changes.



8. QUICK GUIDE OF USING AMAZON ECHO TO CONTROL SMART DEVICES

8.1 What you need to get started

Before using Echo to control your smart devices, please make sure that the following conditions are met:

- Stable Wi-Fi network which could access to Amazon server.
- An Echo device, such as Echo, Echo Tap, or Echo Dot.
- A valid Amazon Alexa account.

- Mirabella Genio APP and a registered account.
- At least one device under your Mirabella Genio account.

8.2 Add devices in Mirabella Genio app (Refer to App Instruction)

You can skip this part if you've already added some devices to your Mirabella Genio account.

- **Download Mirabella Genio app(Refer to App Instruction)**

Search "Mirabella Genio" in App Store or Google Play to install the app.

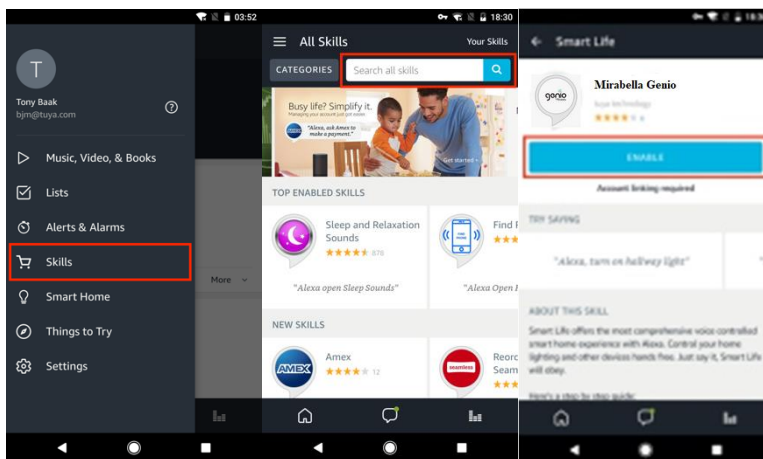
iOS version download: **App Store**

Android version download: **Google Play**

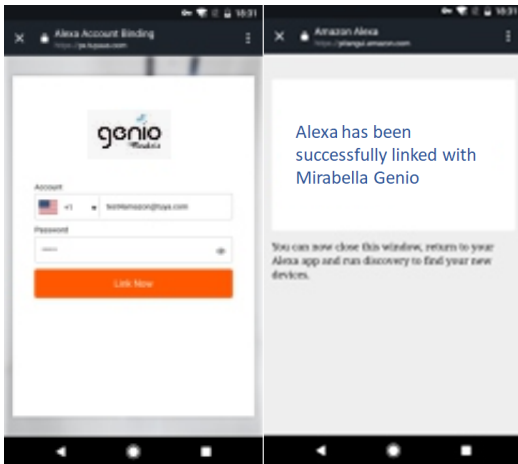
- **Register a Mirabella Genio account and sign in the app (Refer to App Instruction)**
- **Add device and re-name the device (Refer to App Instruction)**

8.3 Link Mirabella Genio account to Echo

1) Tap "Skills" in the hamburger menu, then search "Mirabella Genio". Select "Mirabella Genio" and tap "ENABLE" to enable the Skill.



2) You will be re-directed to the account link page. Type in your Mirabella Genio account and password, don't forget to select the country/region where your account belongs to. Then tap "Link Now" to link your Mirabella Genio account. The country/region, the account, and the password must Match exactly/be the same with the Mirabella Genio account. Close the window when "Alexa has been successfully linked with Mirabella Genio" notice is prompted out.

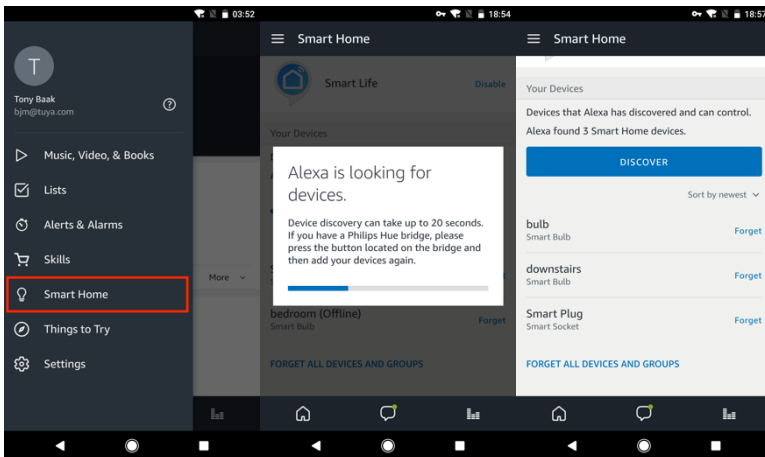


8.4 Control your smart devices through Echo

● Discover devices

Echo needs to discover your smart devices for voice control. You can say "Alexa, discover devices" to Echo. Echo will discover devices which have already been added in the Mirabella Genio app.

You can also tap "DISCOVER" to discover the smart devices. Discovered devices will be shown in the list.



Note:

- ❖ Echo needs to go through “Discover” again after the device is re-named on Mirabella Genio APP.
- ❖ If the Echo cannot find the devices added in Mirabella Genio APP, please disable the Mirabella Genio skill first and go through the Mirabella Genio skill “ENABLE”, APP account login and device discover again to make Echo voice control work.

● Voice control your devices

Now you can control your smart devices through Echo. Here below is an example of how to voice control the device “TV” with Echo:

- ❖ *Alexa, turn on/off TV*
- ❖ *Alexa, channel up/down on TV*

9. QUICK GUIDE OF USING GOOGLE HOME TO CONTROL SMART DEVICES

9.1 Control your smart devices through Google Home

Before using Google Home to control your devices, make sure the following conditions are met:

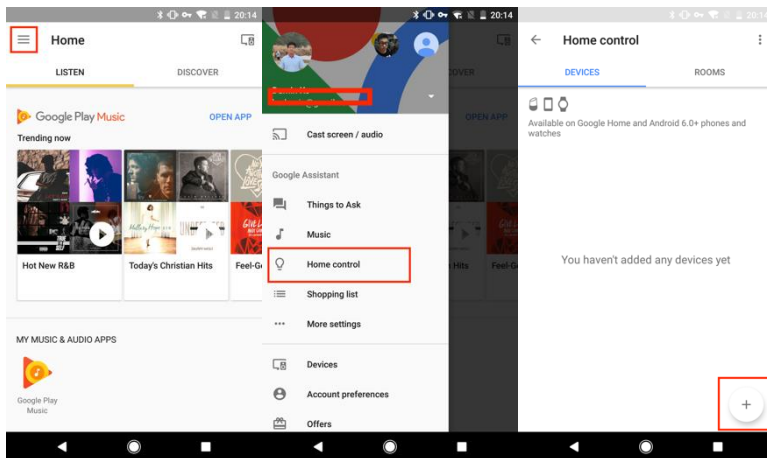
- A Google Home device, or Android phone with Google Assistant.
- Latest Google Home app.
- Latest Google app (Android only)
- A Google account.
- The device display language must be set to English US.
- Mirabella Genio app and a related account.
- Smart devices.

9.2 Add devices in Mirabella Genio app (Refer to App Instruction)

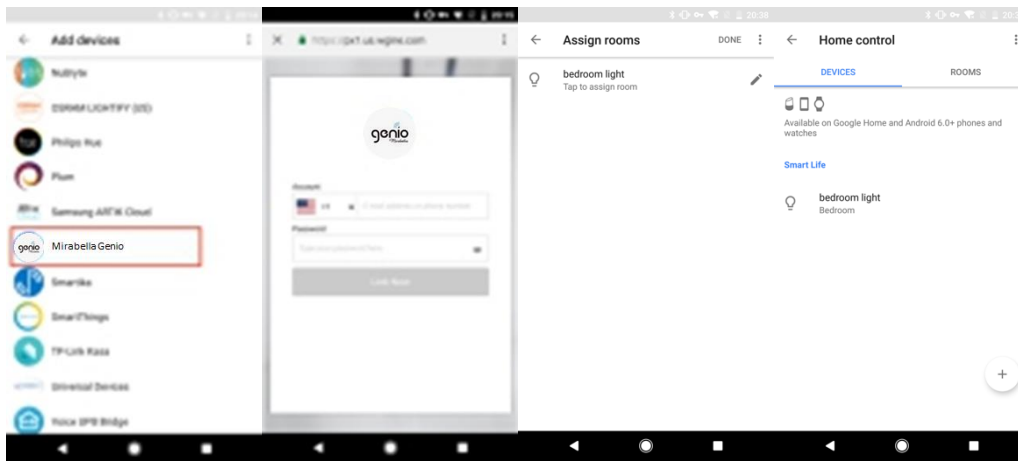
You can skip this part if you've already added some devices to your Mirabella Genio account. And refer to **8.2 Add devices in Mirabella Genio app** for adding devices in Mirabella Genio APP.

9.3 Link Mirabella Genio account in Home Control

1) Tap "Home Control" in the hamburger menu on the Google Home app's home page, then tap "+".



2) Find "Mirabella Genio" in the list. In the new window, select your Mirabella Genio account's region, type your Mirabella Genio account and password, then tap "Link Now". After you assign rooms for devices, your devices will be listed in the Home Control page.



9.4 Control your smart devices through Google Home

Now you can control your smart devices through Google Home. Here below is an example of how to voice control the device “TV” with Google Assistant:

❖ *Ok Google, turn on/off TV*

10. FAQ

Q: The device fails to be added in account?

- A:
1. Make sure the Wi-Fi network is 802.11 b/g/n 2.4GHz;
 2. Make sure the device works with APP in same Wi-Fi Configuration mode: EZ or AP;
 3. Make sure the input SSID and password of the Wi-Fi network are correct;
 4. Make sure Wi-Fi internet connection is working fine;
 5. Make sure the device is powered on;

Q: The device can't control remote control devices

- A:
1. Make sure the device is in your Main Device List in APP;
 2. Make sure the brand of IR code you added in the APP matches the actual brand of remote controller well.
 3. Make sure the device is powered on;
 4. Make sure the Wi-Fi internet is work fine;
 5. Make sure the Mobile phone internet connection is available;

Q: The device does not work with Alexa or Google Home?

- A:
1. Make sure the device is added in your Device APP;
 2. Make sure your device is linked to Alexa or Google Home account;
 3. Make sure your Alexa devices or Google Home devices are working fine;
 4. Make sure the device is working fine in Device APP;

Q: Why does my Genio App show my device is on when it is off?

A: The mode displayed in your app will only show the last setting that was transmitted via the Smart IR. If you turn on or off using your appliance's remote control, it will bypass the IR therefore will not update in your Genio App.