



Genio USB powered Wi-Fi pixel fairy light

WARNING:

LIGHTING CHAIN FOR INDOOR OR OUTDOOR USE (Bulbs are non-replaceable)

ADAPTOR MUST REMAIN INDOORS ONLY – IT CANNOT BE EXPOSED TO THE WEATHER

LED BULBS ARE NON REPLACEABLE

TO ENSURE THE SAFE AND SATISFACTORY OPERATION OF THIS SET PLEASE READ THESE INSTRUCTIONS CAREFULLY AND
RETAIN FOR FUTURE REFERENCE

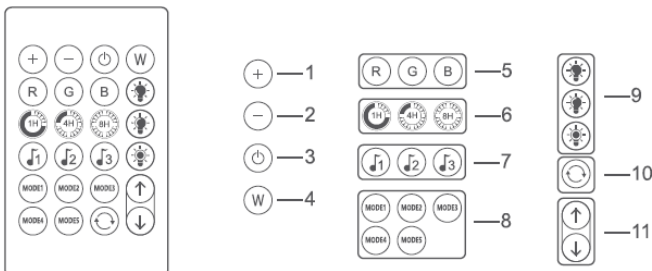
We recommend that the set be tested prior to being set up in the desired location

SAFETY INFORMATION:

- Remove set from packaging before connecting to power supply.
- Before using or re-using the set, inspect carefully
- Do not connect set electrically to another set
- Ensure that all of the cable is completely uncoiled whilst set is in use. Failure to do so may cause over-heating and subsequent malfunction
- Avoid damage to wire insulation (cable), as this could cause a short-circuit and damage the transformer
- Take care that the cable does not get trapped or damaged if it passes through a door or window, this is particularly important if the door, or window is metal.
- Do not use any set which has: – cut, damaged, or frayed wire insulation, cracks in lamp-holders, loose connections or exposed wires

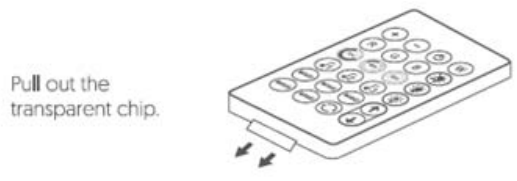
Using the IR remote controller (offline mode, doesn't require pair with Genio APP)



IR Remote Controller 24 KEY



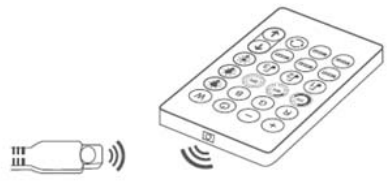
1.	LED brightness adjustment button /increase sensitivity in music mode
2.	LED brightness adjustment button /reduce sensitivity in music mode
3.	ON / OFF button
4.	LED white button [switch between warm white and cool white]
5.	LED colour button [Red Green Blue]
6.	Timing function
7.	3 Music modes
8.	5 fixed colour rich modes
9.	Brightness button: 25% 50% 100%
10.	Combinations button, 20 fixed colour rich mode cycle, every 30 seconds
11.	In the static monochrome mode, the 16 colours change forward or backward in sequence, in the dynamic mode, the 20 modes change forward or backward in the sequences

Before use, please remove the battery cover screw and pull out the transparent chip from the bottom of the IR remote, and refit the screw again. Please keep the button cell battery out of reach of children..

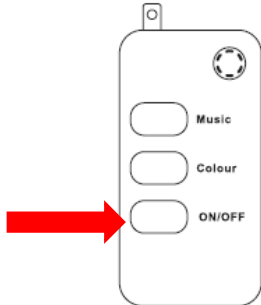


 WARNING	
KEEP OUT OF REACH OF CHILDREN Swallowing can lead to chemical burns, perforation of soft tissue, and death. Severe burns can occur within 2 hours of ingestion. Seek medical attention immediately.	

Make sure the IR remote aims at the IR receiver within the sensing distance. The angle of the IR receiver is 120deg and the sensing distance is 5 meters. Please remotely control within the sensing range.



Wi-Fi Controller

	Music: short press to entre the music mode, you can switch between 4 music modes
	Colour: Short press to switch between 20 colour scene modes
	ON/OFF: short press to turn on/off the led light, press and hold to entre the EZ pairing mode, press and hold agin to entre the AP pairing mode

Install the APP and register Account

For the best experience, download the "Mirabella Genio" APP to your smartphone from App Store or Google Play, the APP icon will be displayed after it's installed successfully, open the APP and register account.

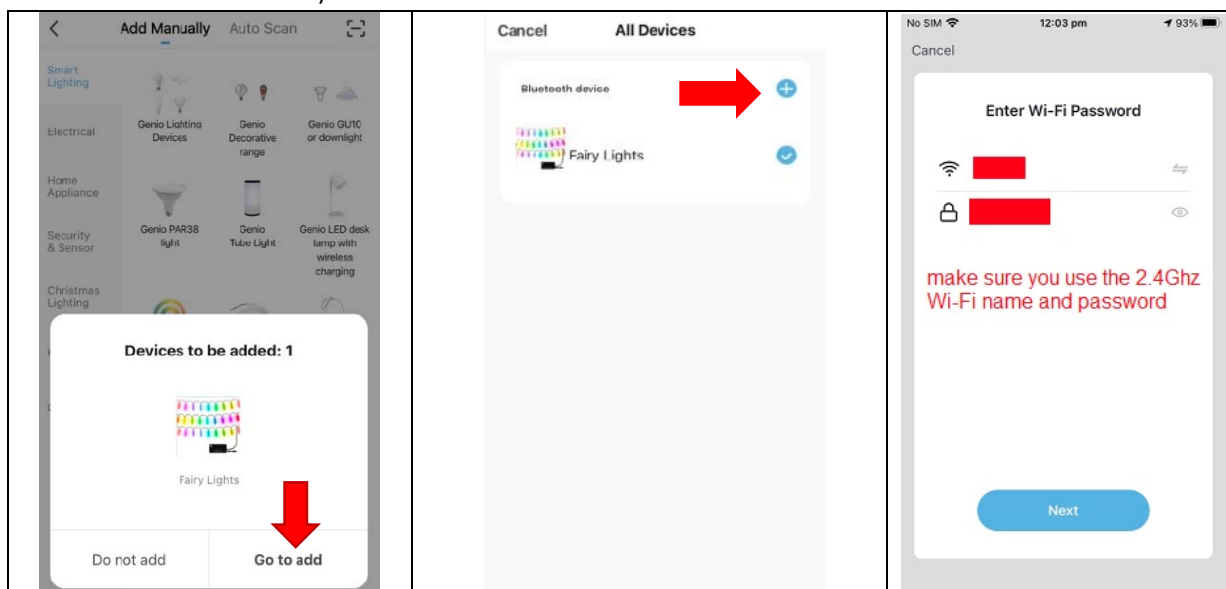
Bluetooth pairing assistant function on selected model only

Our latest genio smart Wi-Fi lighting range have Bluetooth pairing assistant function, to make the pairing even easier than before, to take advantage of this function, please make sure turn ON the Bluetooth function on your phone,

1. Take the light chain out of the box, fully uncoil it, Connect the light chain to the Wi-Fi controller
2. Plug the Wi-Fi controller's USB end to a standard 5V 1A phone charger (not included) or PC's USB port.
3. Light chain should start to blink red rapidly (1 blink per second), device is ready to pair with Genio APP.

If the light chain failed to blinking red when first power on, Press and hold the **ON/OFF** button on the Wi-Fi controller until the light chain start to fast blinking

4. Open and login into Mirabella Genio App, tap on the + on the top right cornice, APP will automatically detect the smart device in your local network, follow the below screens to add the smart device to your Genio App, please make sure you use the correct 2.4Ghz Wi-Fi name and password to connect, (please make sure don't use Wi-Fi name that end with -5G)



However, if this method doesn't work for you, please make the light slowly blinking and retry it, alternately please **Turn OFF** your Bluetooth on your phone, then try the EZ method or AP method listed below

There are two methods to connect your light, EZ method (fast blinking) VS AP method (slowly blinking)

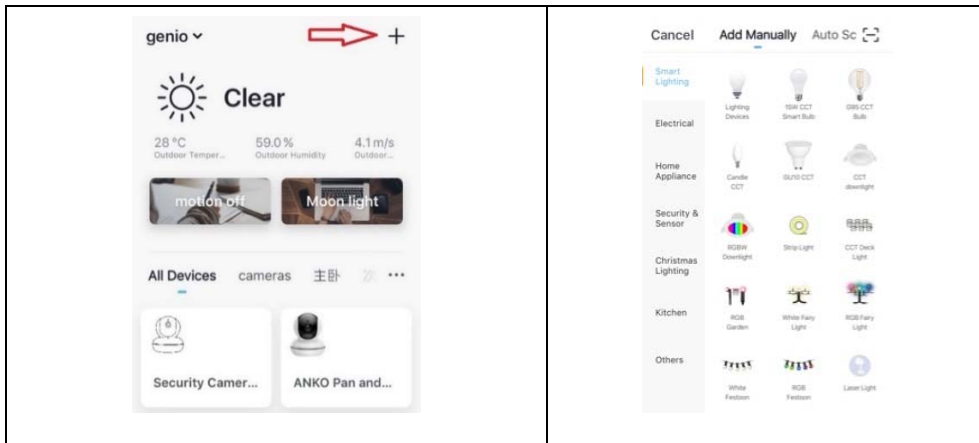
EZ Method (when the light is fast blinking, 1 blink per sec)

1. Take the light out of box and fully uncoil it,
2. Connect the USB port to a standard 5V 1A phone charger (charger is not supplied)
3. wait for the light to rapidly blinking red, device is now ready to pair wit Genio APP
If the LED doesn't start to blinking red automatically, Press and hold the ON/OFF button on the Wi-Fi controller until the LED start to blinking red
4. Open and login to Mirabella genio APP, follow the in-app prompts to connect smart light chain to your network

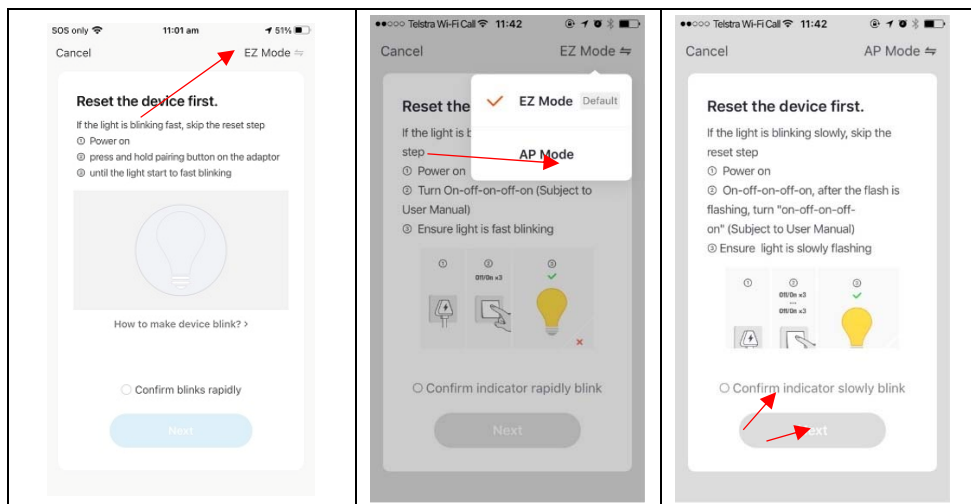
if you cannot connect via EZ mode (fast blinking 1 blink per second), please try AP mode, while the LED light is fast blinking, press and hold the ON/OFF button again until it is slowly blinking (1 blink per 2 second), follow the instruction below or watch this AP mode pairing method <https://youtu.be/6k0AUTTgKjw>

AP Method (light is slowly blinking, 1 blink per every 2 seconds) recommend method for Telstra NBN user

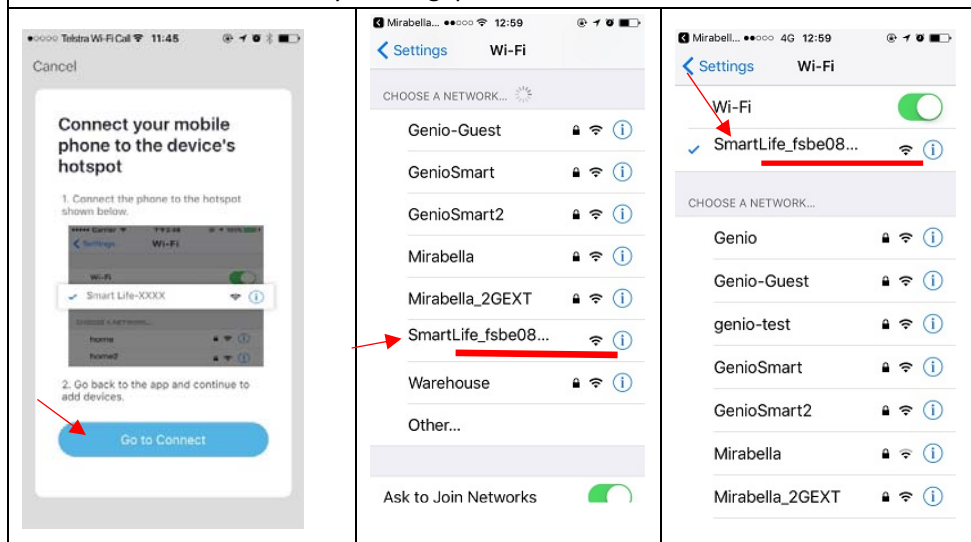
1. open up the Mirabella genio APP, tap on + , add manually , select **genio fairy light**




Entre your Wi-Fi name and password, then in **reset the device first** screen tap on **EZ mode** in the Top right hand corner just below the battery icon , select **AP Mode** (refer to the 1st and 2nd image below) Now **Confirm indicator slowly blinking** (refer to image 3), hit **Next**, then **Go to connect** and connect to Wi-Fi named **SmartLife_XXXX**



Note: If you fail to see Wi-Fi name beginning with the word SmartLife_XXXX, then the device is not slowly blinking, please reset it



After connected to SmartLife_XXXX, return back to Mirabella Genio, APP will start commence the countdown process and add the devices in the end of countdown.

	<p>Please pay attention to the screen to determent the cause of time-out error</p> <p>If the light never stops blinking, that means issue is on the phone setting, if you are using iPhone IOS 14, please ensure local network permission is turned on</p> <p>if light does stop blinking, but unable progress to “register on cloud” it indicates communication error with your router to our cloud service (need to check router setting)</p>	<p>please check and ensure</p> <ol style="list-style-type: none"> 1. You enter the correct 2.4Ghz Wi-Fi name and password 2. Your light is receiving good Wi-Fi signal, please move it closer to the router and retry 3. please disable 5Ghz Wi-Fi signal then retry 4. If you have no luck with android phone, please try using Iphone or ipad to pair it
---	---	---

If you still having issue with pairing after use AP method, please check our FAQ pages on www.mirabellagenio.com.au/faqs or contact Mirabella technical support line.

**Should the Wi-Fi controller, LED, supply flexible cord get damaged, do not attempt to repair.
TO BE REPAIRED BY AN AUTHORIZED PERSON ONLY**

THIS IS AN AUSTRALIAN STANDARDS REQUIREMENT IN THE INTEREST OF YOUR SAFETY

Mirabella International Pty Ltd
Toll Free: 1800 636 528
www.mirabellagenio.com.au