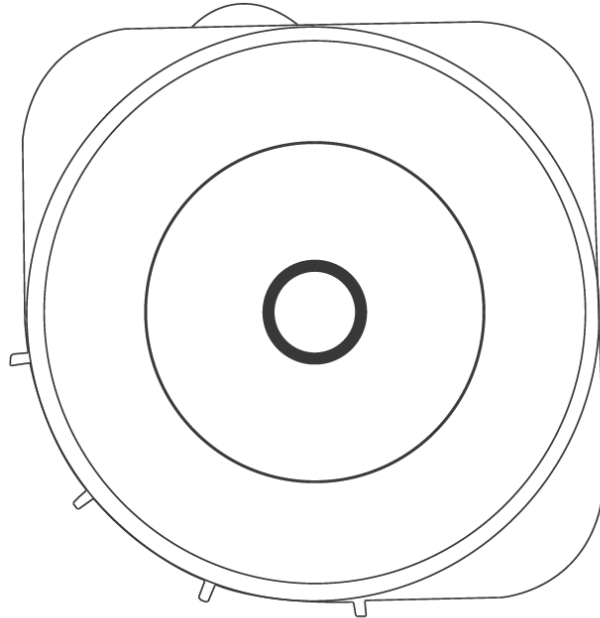


# Quick Start Guide

## Mirabella Genio Smart Star Projector



KEYCODE: I003879

Version 3.0 27/7/2021

The smart star projector is an entertaining electronic device and able to project the starry sky with glowing colourful clouds onto your ceiling giving you the visual experience of the milky way and galaxy nebula without stepping outside of your room.



1. Laser light
2. Projector light
3. Switch button
4. Microphone

#### SPECIFICATION

<b>Power Input</b>	5V 1A
<b>Classification of lasers</b>	Class 1
<b>Work Temperature</b>	-10~40°C
<b>Wireless Type</b>	WiFi 2.4Ghz
<b>Laser color</b>	Green,515-520nm/Blue 450nm
<b>Nebula color</b>	Colorful,450nm
<b>Application</b>	Indoor use
<b>Control by</b>	Amazon Alexa, Google Home, APP
<b>Dimensions(cm)</b>	16.2L*6.8W*16.2H
<b>Net Weight</b>	0.5Kg

## Warnings:

Please keep away from children. Children need to use it under adult supervision.

Please use the product in line with instructions.

Do not stare directly at the projection lens.

Do not disassemble and assemble by yourself.

For indoor use only.(Works better in a dark environment)

Only use with the adaptor provided.

Do not point the laser light at person or pet.

Please keep distance from water to avoid damage.

Do not cover the laser light with cloths or other objects.



## APP control / Manual Control Mode

This star projector can be used either manually or via the Genio App.

To make it ready for APP pairing, press and hold the power switch button until the **RED Laser** starts to blink rapidly, the projector is now ready to be paired with Genio App, and if no action is taken, after 3 minutes it will stop blinking. Once it has stopped blinking, you can use short press the switch button to change the projection mode manually.


## Connection Preparation for it to be used with the Genio App.

Your phone must be connected to 2.4Ghz Wi-Fi and not to the 5GHz network.

To verify your mobile device is set to a 2.4Ghz Wi-Fi network, navigate to the **Settings** menu and click on **Wi-Fi**. In this menu you will see all the detectable networks in your area. Locate the SSID (the name of your network) and ensure that the Wi-Fi SSID does not end with a 5G / 5GHz.

Refer to the example on the next page.



Once you have confirmed that you have selected the 2.4GHz network, check that you have a strong WI-FI signal (at least two bars) in the location where the smart device is to be installed. 

If you don't have at least two bars signal on your phone, then you may need to reconsider relocating the smart device to a different location or obtain a Wi-Fi extender to boost the Wi-Fi signal strength.

### **Install the APP and register Account**

For the best experience, download the "Mirabella Genio" APP to your smartphone from the App Store or Google Play, the Genio APP icon will be displayed after it has been installed successfully. Then open Mirabella Genio APP and register an account.



### **Bluetooth Pairing method**

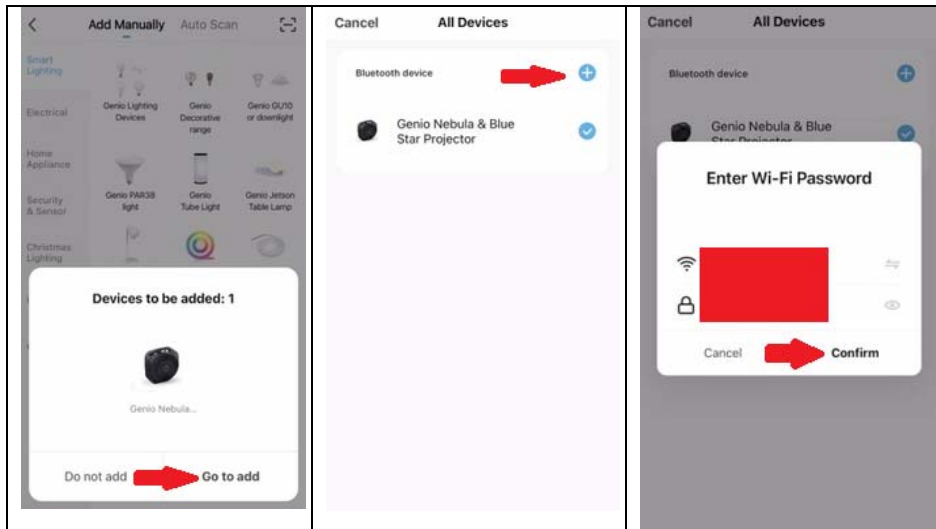
Our latest genio range has the Bluetooth pairing assistant function, to make the pairing even easier than before, to take advantage of this function, please turn **ON** your phone's Bluetooth

Press and hold the switch button and wait for the **RED laser** to start rapidly blinking, once the **RED Laser** is blinking, the projector is ready to pair,

1. Open the Mirabella Genio APP, tap on the “+” on the top right



2. Genio APP will automatically discover the projector, tap on **Go to add**,
3. Then select the plus symbol +, then enter your 2.4Ghz Wi-Fi name and password (don't use Wi-Fi name that is end with -5G) ,**confirm**

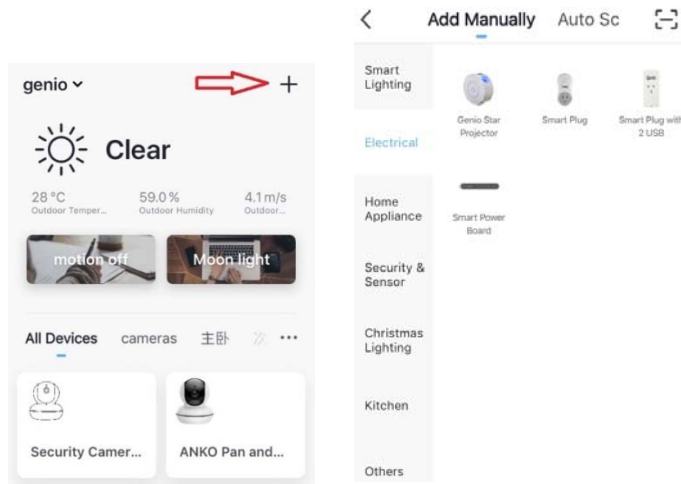


Follow the APP's instructions carefully to complete the network pairing process


**if the Bluetooth method doesn't work for you, please turn the Bluetooth OFF on the phone, then try the EZ method below**

#### **Pairing the Star Projector using Mirabella Genio App (EZ method)**

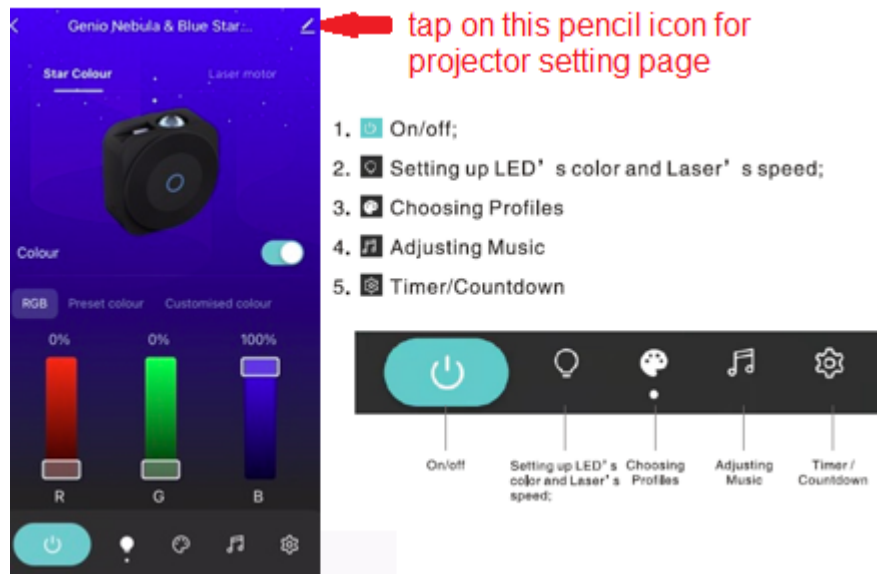
1. Remove the protective film sticker from the laser lens
2. Connect the power to the projector using the supplied adapter then power it on.
3. The **RED laser** will start blinking rapidly (2 blinks per second) – The projector is now ready to pair.  
If the **RED laser** is not blinking, **press and hold** the switch button on the Star Projector until the RED laser start to blinking rapidly,
4. Open the Mirabella Genio APP, then tap on “+” symbol, then choose **Electrical**, and select **Star Projector** from the menu.



Follow the APP's instructions carefully to complete the network pairing process.

<p><b>Please pay attention to the screen to determent the cause of the time-out</b></p> 	<p>If the red laser light never stops blinking, there could be an issue with your phone;s setting, if you are using IOS14, please make sure turn the “local network” permission on for Genio APP</p> <p>if the light does stop blinking, but is unable to progress to “<b>register on cloud</b>” it indicates a communication error with your router to our cloud service (need to check router setting)</p>	<p><b>please check and ensure</b></p> <ol style="list-style-type: none"> <li>1. You enter the correct 2.4Ghz Wi-Fi name and password</li> <li>2. Your projector is receiving a good Wi-Fi signal.</li> <li>3. manually turn off 5Ghz Wi-Fi signal is turned off on the router and keep the 2.4Ghz WI-Fi on only.</li> </ol>
--	--	---

## Star Projector APP UI (subject to change with software update)



### FAQ:

#### How to connect Star Projector to another router/genio account?

Go to the Star Projector' settings page, look for "remove device" Remove it and reset the star projector and pair it again through the APP.

#### Star Projector goes offline and doesn't reconnect back after a power failure?

Go to the Star Projector' settings page, look for "remove device" Remove it and reset the Star Projector and pair it again through the APP.

#### Using the EZ method and still Receive the time out Cannot find Device error?

Try borrow a Ipad or iphone to pair, download the Genio APP to ipad or iphone, login using your existing genio user name and password, pair it, then go back to your android device, it will show up under your account

Ensure Star Projector is in a location with strong Wi-Fi signal coverage

Manually disable the 5Ghz Wi-Fi signal on the router setting (please contact your internet provider if you are not sure how to disable it)

Ensure that the 2.4Ghz Wi-Fi signal is on.  
Ensure the **RED laser** is rapidly blinking.  
Please check you have entered the correct 2.4Ghz Wi-Fi SSID and password

**I am using Optus/Telstra NBN smart modem , and I cannot get it to pair?**

please try using the method listed on the <https://www.mirabellagenio.com.au/faqs/>

If you have done all of the above, ensuring that the 5Ghz is disabled and still failed to connect, then your modem could be incompatible with smart device or you may have reached the max number of the WI-FI devices your router can support.



All trademarks are used for reference purposes only. Made in China

MIRABELLA INTERNATIONAL PTY LTD  
1 MIRABELLA DRIVE, TULLMARINE, VIC, AUSTRALIA 3043  
TOLL FREE: 1800 636 528, [www.mirabellagenio.com.au](http://www.mirabellagenio.com.au)